

D. LEE 59005

Witness Mon

T. WOOD

5-31-85

24 | 24

Brass Cap

24 | 24

1960

ditch

700'

R.R. SPIKE  
30.09'

6300 W

Metal Gate

approx - 48.5'

Cultivated field  
26.72'

FP

Witness Mon.

4x4 Post

FP  
18.84'

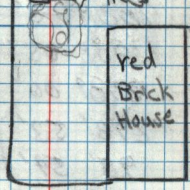
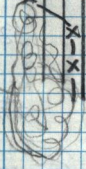
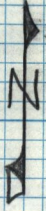
Center of section is 272.80' East of witness mon and falls in a cultivated field. Corner is not in

trees

red Brick House

Curtis Parker

trees



(no other info on this one)